

INTRODUCING **IMPULSE™**

Whether you're tracking fast-moving targets or you're ready to pull the trigger on the trophy you've been stalking, speed is the name of the game. The new Savage straight-pull rifle is instinctive and lightning-fast—and every inch of the rifle encompasses breakthrough technology for speed and precision. It's unlike anything on the market, and only Savage is bold enough to deliver it to the world in a high-octane, American-made way.



IMPULSE HOG HUNTER

When clearing hogs is a necessity, IMPULSE Hog Hunter's straight-pull action delivers. Hogs rarely appear alone, and the speed of the IMPULSE Hog Hunter allows hunters to get back on target fast. The action is purpose built for hog-stomping. IMPULSE Hog Hunter is there for the second shot, and the third, and the fourth... Get the upper hand in pest control.



IMPULSE BIG GAME

When speed is the name of the game, the straight-pull action at the heart of IMPULSE Big Game delivers like no other bolt-action can. This new American made Savage rifle is instinctive and fast—and every inch of the rifle encompasses breakthrough technology for repeat accuracy and enhanced safety. IMPULSE Big Game is built for long range stopping power. Magnum power has never been this fast.



IMPULSE PREDATOR

IMPULSE Predator has the speed needed for effective predator hunting. The American made IMPULSE Predator combines legendary Savage accuracy with the lightning-fast speed of a straight-pull action to create a rifle capable of making follow-up shots. Nothing's better for hunting carnivores that travel in packs. For long-range accuracy and quick shots when the moment is right, IMPULSE Predator delivers.

SAVAGE® **IMPULSE**



SHOW YOUR SAVAGE PRIDE

STORE.SAVAGEARMS.COM



SAVAGE®
#WeAreSavage

©2020 Savage Arms, Inc.

SAVAGE®

IMPULSE™



BUILT FOR SPEED. BUILT FOR ACCURACY.



INTRODUCING **IMPULSE**™ STRAIGHT PULL BOLT ACTION DESIGN INNOVATIVE TECHNOLOGIES SAFETY FOCUSED



1. HEXLOCK
a robust bolt design with bearings that expand to allow for superior safety. As gas pressure from a fired round builds, HEXLOCK™ remains engaged.



3. MULTI-POSITION, AMBIDEXTROUS BOLT HANDLE
allows for multiple positions for the bolt angle, in addition to right or left hand position, and also serves as a security key to the gun.



2. ROBUST LOCK UP
design with free floating, interchangeable bolt head.



4. INTEGRAL MIL-SPEC PICATINNY RAIL enables reliable and sturdy mounting with multiple optic mount options.



5. AMBIDEXTROUS TANG SAFETY
magazine release, and quick release allow for intuitive operation.



6. SINGLE STEP QUICK RELEASE button unlocks the bolt and automatically resets, eliminating cycling failures.



7. SINGLE STEP SIDE BOLT
release with no manipulation required on bolt insertion.



8. CYLINDRICAL BOLT
design allows for smooth handling and prevents bolt bind.

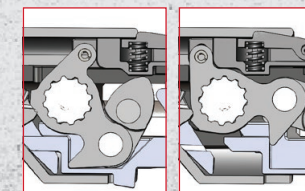
SCAN FOR MORE ON **IMPULSE** TECHNOLOGY



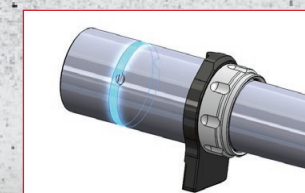
PROVEN FOUR-BOLT BARREL CLAMP
with integral lock provides easy disassembly and repeatable zero.



SELF-CONTAINED MODULAR SUBASSEMBLIES
enable simple toolless disassembly and assembly.



ROTARY BOLT HANDLE
allows for controlled loading, leveraged bolt close, and pre-extraction.



BARREL EXTENSION
with barrel locknut that allows for accurate headspace control.



NEW



IMPULSE HOG HUNTER

OD Green AccuStock® with AccuFit® // AccuTrigger // Straight Pull Bolt // Matte Black Aluminum Receiver // Carbon Steel Heavy Fluted Barrel // Threaded (5/8-24") // Integral 20 MOA rail // Detachable Box Magazine

Length of Pull = 12.75-13.75" / 32,4 - 34,9 cm



PART #	CALIBER	BARREL LG (IN/CM)	TWIST RATE	OVERALL LG (IN/CM)	MAG CAPACITY	WEIGHT (LB/KG)	ACCU TRIGGER ADJ.
57653	.308 WIN.	18 / 45,7	10	39.3 / 99,8	4	8.5 / 3,9	2.5-6LBS / 1.130-2.270 g
57654	6.5 CREEDMOOR	20 / 50,8	8	37.3 / 94,7	4	8.5 / 3,9	2.5-6LBS / 1.130-2.270 g
57655	30-06 SPFLD.	20 / 50,8	10	41.5 / 105,4	4	8.7 / 4,0	2.5-6LBS / 1.130-2.270 g
57656	300 WIN. MAG.	24 / 61,0	10	45.5 / 115,6	3	9.3 / 4,2	2.5-6LBS / 1.130-2.270 g

NEW



IMPULSE BIG GAME

KUIU® Verde 2.0 Camo // AccuStock® with AccuFit® // AccuTrigger // Hazel Green Cerakote® Aluminum Receiver and Steel Barrel // Straight Pull Bolt // Carbon Steel Fluted Barrel // Threaded (5/8-24") // Integral 20 MOA rail // Detachable Box Magazine

Length of Pull = 12.75-13.75" / 32,4 - 34,9 cm



PART #	CALIBER	BARREL LG (IN/CM)	TWIST RATE	OVERALL LG (IN/CM)	MAG CAPACITY	WEIGHT (LB/KG)	ACCU TRIGGER ADJ.
57647	6.5 CREEDMOOR	22 / 55,9	8	43.5 / 110,5	4	8.8 / 4,0	2.5-6LBS / 1.130-2.270 g
57648	.243 WIN.	22 / 55,9	9.25	43.5 / 110,5	4	8.8 / 4,0	2.5-6LBS / 1.130-2.270 g
57649	.308 WIN.	22 / 55,9	10	43.5 / 110,5	4	8.8 / 4,0	2.5-6LBS / 1.130-2.270 g
57652	300 WSM	24 / 61,0	10	43.5 / 110,5	2	8.9 / 4,0	2.5-6LBS / 1.130-2.270 g
57650	30-06 SPFLD.	22 / 55,9	10	43.5 / 110,5	4	8.8 / 4,0	2.5-6LBS / 1.130-2.270 g
57651	300 WIN. MAG.	24 / 61,0	10	43.5 / 110,5	3	8.9 / 4,0	2.5-6LBS / 1.130-2.270 g

NEW



IMPULSE PREDATOR

Mossy Oak® Terra Gila Camo // AccuStock® with AccuFit® // AccuTrigger // Straight Pull Bolt // Matte Black Aluminum Receiver // Carbon Steel Medium Contour Barrel // Threaded (5/8-24") // Integral 20 MOA rail // Detachable AICS Magazine

Length of Pull = 12.75-13.75" / 32,4 - 34,9 cm



PART #	CALIBER	BARREL LG (IN/CM)	TWIST RATE	OVERALL LG (IN/CM)	MAG CAPACITY	WEIGHT (LB/KG)	ACCU TRIGGER ADJ.
57657	22-250 REM.	20 / 50,8	10	41.5 / 105,4	10	8.5 / 3,9	2.5-6LBS / 1.130-2.270 g
57658	.243 WIN.	20 / 50,8	9.25	41.5 / 105,4	10	8.5 / 3,9	2.5-6LBS / 1.130-2.270 g
57659	.308 WIN.	20 / 50,8	10	41.5 / 105,4	10	8.5 / 3,9	2.5-6LBS / 1.130-2.270 g
57660	6.5 CREEDMOOR	20 / 50,8	8	41.5 / 105,4	10	8.5 / 3,9	2.5-6LBS / 1.130-2.270 g